

# LifeDX HBPro

## Fully automated HbA1c analyser HPLC based



## HPLC based HbA1c analyser The Big 4

**1. Based on HPLC technology- Gold standard methodology.**  
NGSP and IFCC certified.

**2. Suitable for any lab set up**

5 samples loading capacity suitable for any lab set up. Most compact fully automated HPLC system. Small footprint reduces bench space needed

**3. Fully automated system**

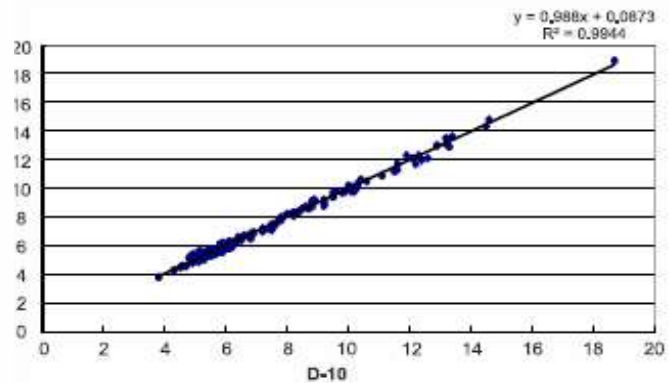
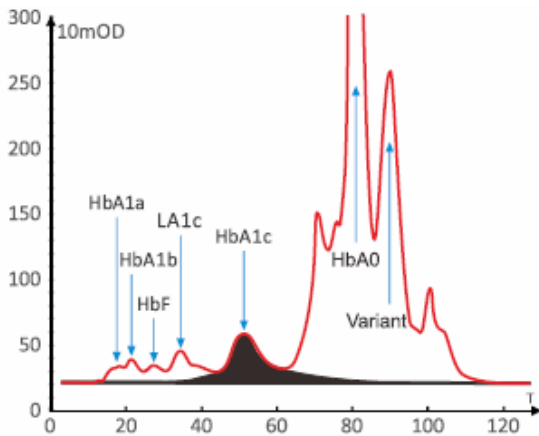
Helps to minimize operation steps. External barcode scanner for sample identification with fully automated system cleaning after test.

**4. Precise, reliable and accurate results**

Offers inter measuring CV  $\leq 1.5\%$  and intra measuring CV  $\leq 3\%$ . Superior quality chromatographic resolution to eliminate interferences.

Dual wavelength detection to avoid reagent peak interferences and nonspecific absorption of hemoglobin. The mutation factor interference to the peak can be easily counteracted.

Offers degasser for more accurate flow rate with improved separation effect of column and prolong its lifetime. It reduces background absorption and improve detection sensitivity.



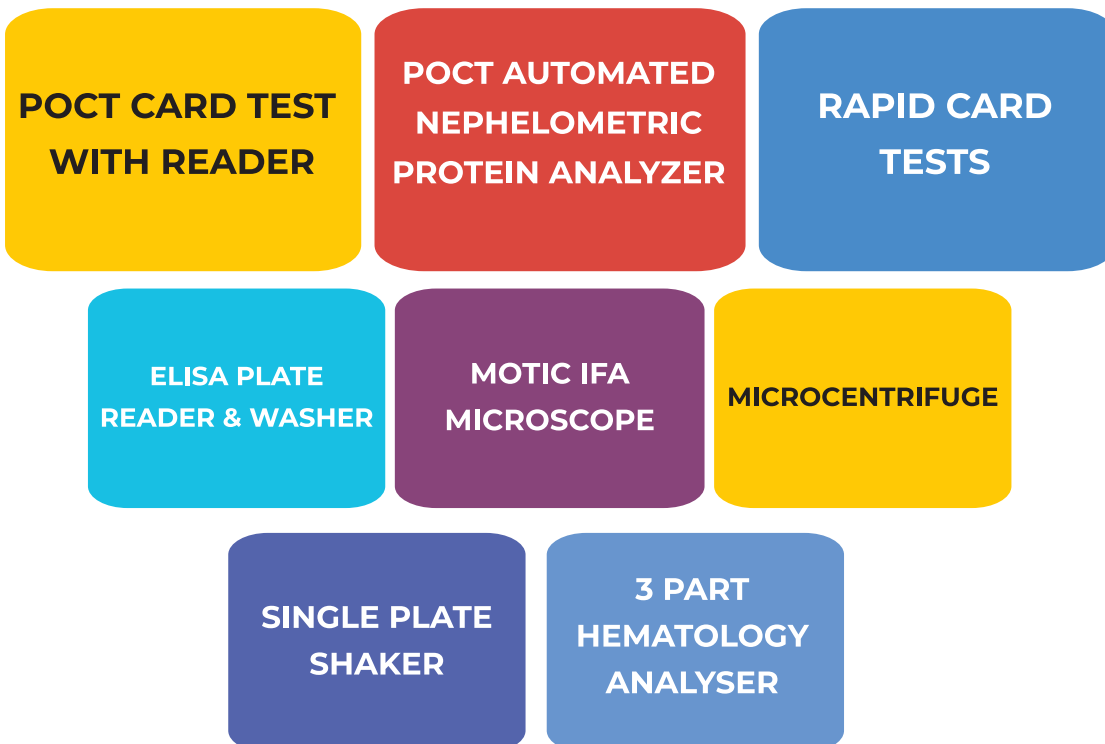
## Other features

1. **Reagent kit needed-** Eluent A, Eluent B, Hemolysin L, Calibrator, QC material
2. **Varied test modes-** Variant Mode (A1c/E/D/S/C)
3. **Broad test range-** 3%- 18%
4. **Precision-** CV  $\leq$  1.5%
5. **Test speed-** 130 secs/test
6. **Different sample types-** Venous blood, finger peripheral blood, Lyophilized whole blood, 10 $\mu$ L (Whole blood), 400 $\mu$ L ( Diluted blood)
7. **Double detection-** with photometer of 415nm+500nm Detector
8. **Large display-** 10.1" TFT True color LCD Touch screen
9. **Results storage-** 4000 sample results
10. **Flexible compatibility-** USB, LAN, LIS compatible

## Other technical specifications:

|                   |  |
|-------------------|--|
| Filter            | $\geq$ 400T  |
| Software          | Linux software with self diagnosis to monitor and detect system errors |
| Information input | Scanner or touch keypad  |
| Printer           | Thermal printer  |
| Operation         | Temperature 10 $\approx$ 30 deg C                                      |
| Humidity          | $\leq$ 80%   |
| Power             | AC 100-240V 50/60HZ 120VA  |
| Dimensions        | 450(L)*360(W)*540(H)mm   |
| Weight            | 32.8 Kg  |

# CHECK OUT OUR OTHER PRODUCTS





**INFECTIOUS  
ELISA**

**ENDOCRINOLOGY  
ELISA**

**AUTOIMMUNE  
ELISA**

**IMMUNO  
FLORESCENCE KITS**

**IMMUNOBLOTS  
LINE IMMUNOASSAY  
KITS**

**MANY MORE  
OTHER SPECIALITY  
ELISA....**



immunoshop

Promoting better diagnostic tools




immunoshop

Lab **Automation**

312/309, Reheja Arcade,  
Sector-11, CBD, Belapur,  
Navi Mumbai-400614, INDIA

✉ [sales@immunoshop.com](mailto:sales@immunoshop.com)

☎ 9 306 306 306

[www.immunoshop.com](http://www.immunoshop.com) 

[facebook.com/immunoshop](https://facebook.com/immunoshop) 

[youtube.com/immunoshop](https://youtube.com/immunoshop) 